

2D Barcode Scanner

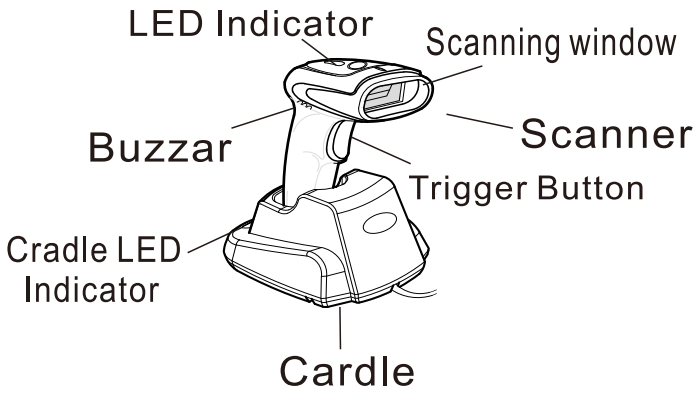
Quick Start Guide



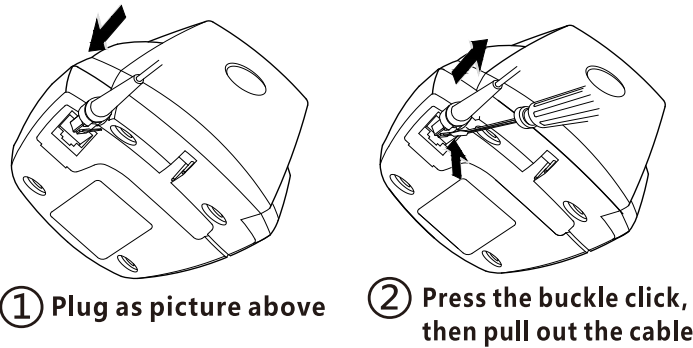
- Contents:
- Barcode Scanner
 - Cradle
 - Instructions
 - warranty card
 - Certificate
 - USB / RS232 Cable
 - Power Adapter (Rs232 only)

No. :75050146

1 Scanner overview

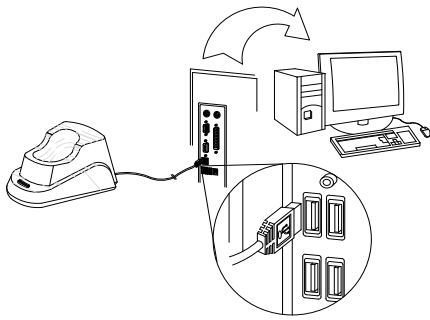


2 Cable plug&Unplug

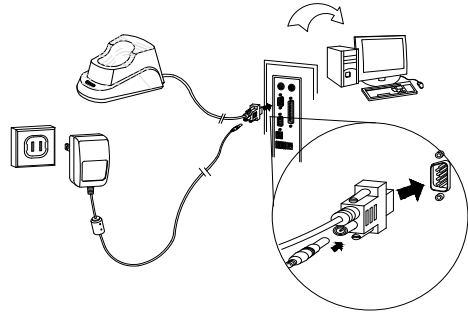


3 Cable connection guide

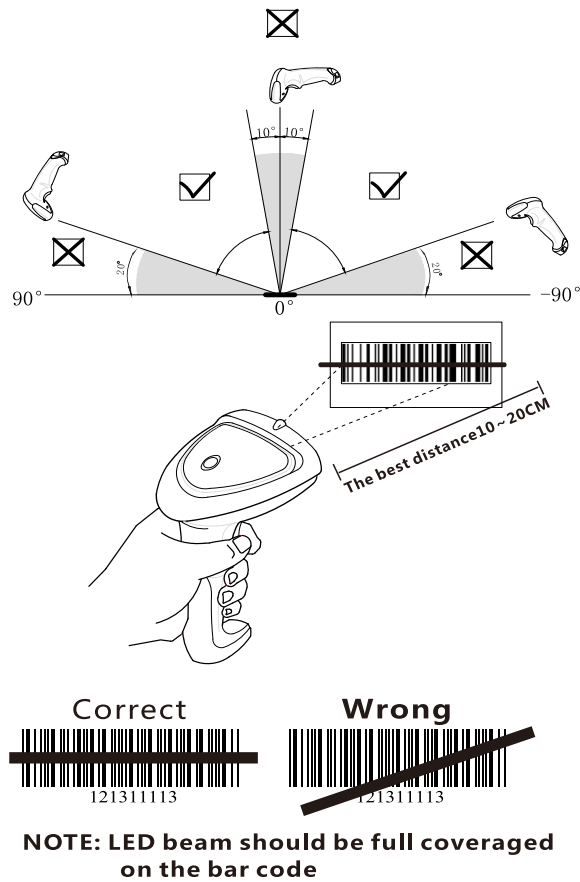
(1) USB Data cable



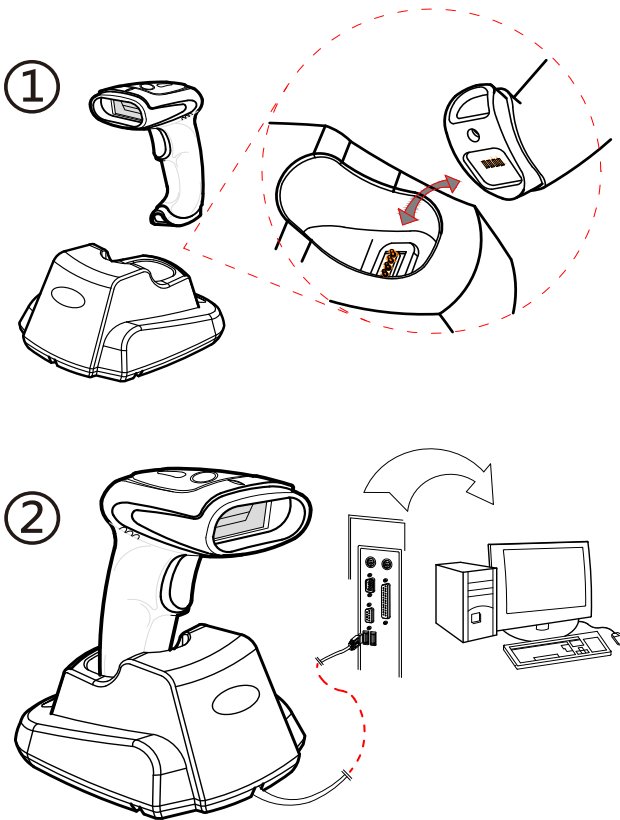
(2) RS232 Data cable



4 Scanning method and distance

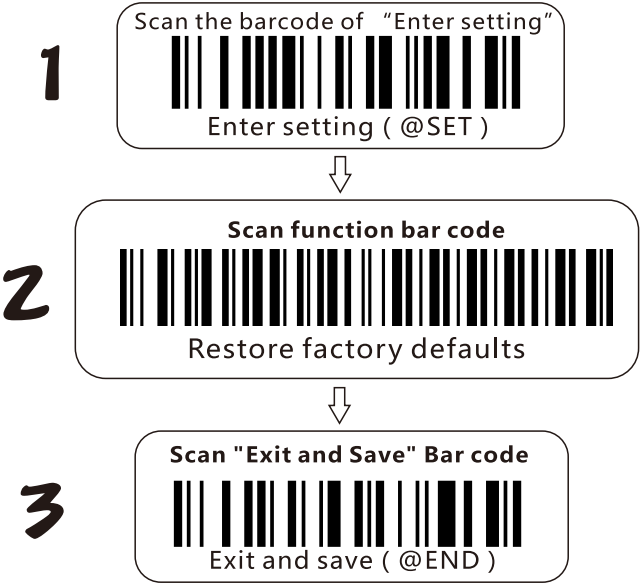


5 Charging method



Wireless settings

Setting Step



Note: All functions must be in accordance with the settings for The above process or scan the bar code setting function is invalid.

Pairing Guide

Method :

First step: Insert the cradle as above picture. the green light of the cradle will continue (on not able to pair when green light flashing.) .
Second step: After insert the cradle , it must be scan the below bar code within 20s

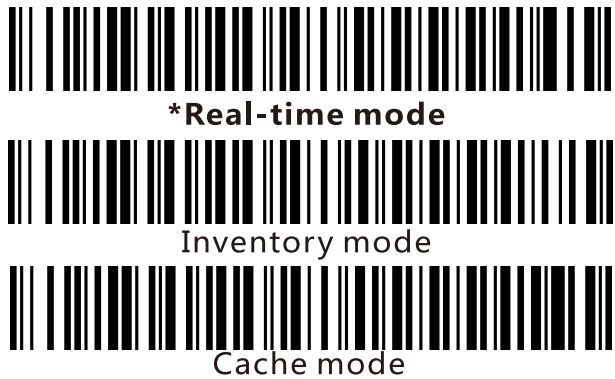


Pair in one step

1 Transmitter(Scanner)

Working mode

Following working mode can be set directly.

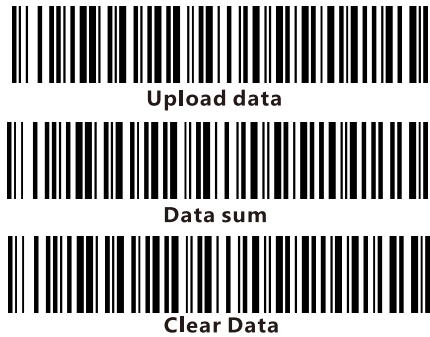


Note:

Real time mode: Scan and transmit data will automatically lost if upload failed.
Cache mode: Same as real time mode if connection normal. Scan bar codes will be automatically restore if connection failed. Will upload one by one if connection return as normal.
Inventory Mode: Scanning bar codes will be restored without upload. Will upload once scan "Upload data" barcode. Will clear once scan "Clear data" . Will check sum once scan" Data sum" .

2 Inventory mode setting

Following working mode can be set directly.



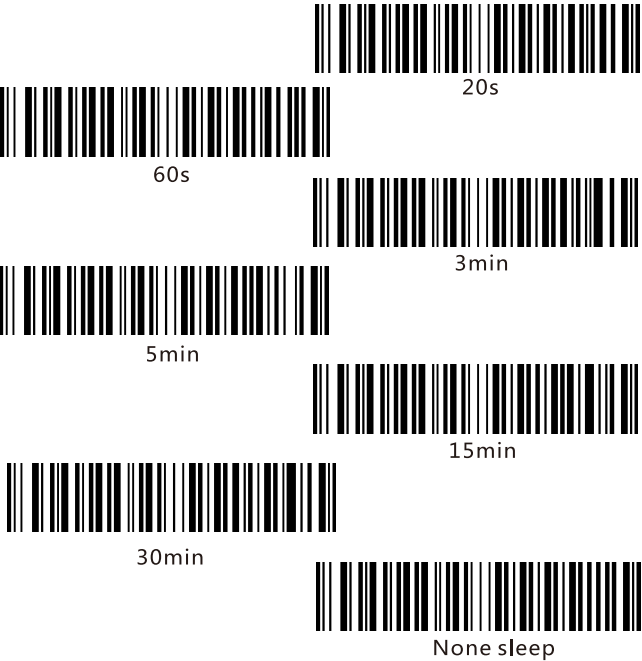
Upload data: Bar code data will transmit to terminal once scan this bar code.
Date sum: Scan "Data sum" bar code to check the scanner restore data sum.
Clear data: Scan "Clear data" and clear all the restore data in scanner

③ Sleep time setting

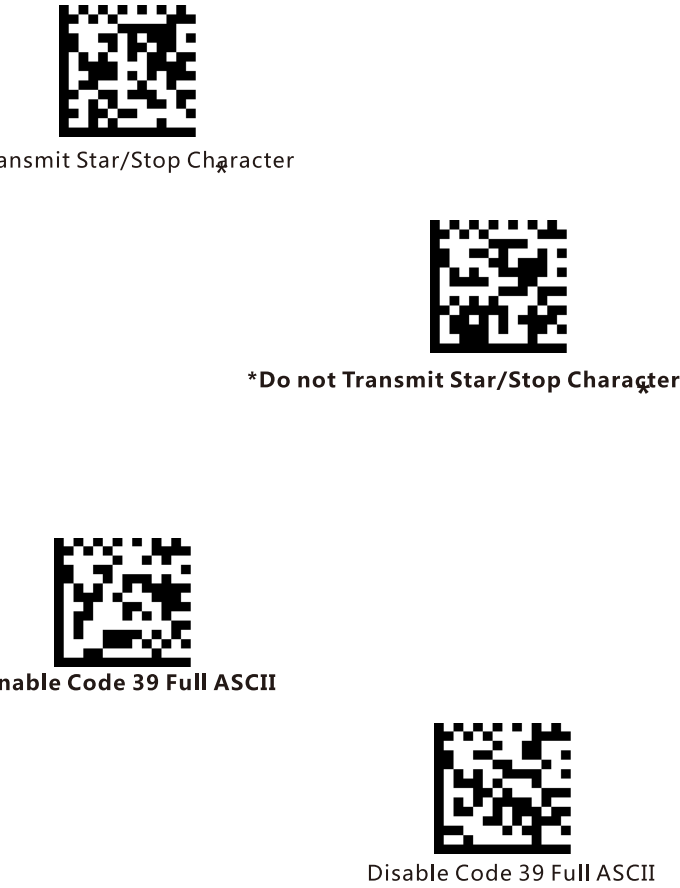
The sleep time means the time between the last operation move and auto turn off the scanner. User able to scan the corresponding bar code of the sleep time which is needed to accomplish the sleep time setting.

Sleep time setting process:

- Step1:Scan " SET "bar code , enter setting.
- Step2:Scan the corresponding sleep time bar code to accomplish the setting.
- Step3:Scan " END "bar code , finish setting.



③ Code 39 Setting



Receiver(Cradle)

Set interface mode

Receiver(Cradle) can upload data via USB keyboard or Rs232. Default is USB keyboard



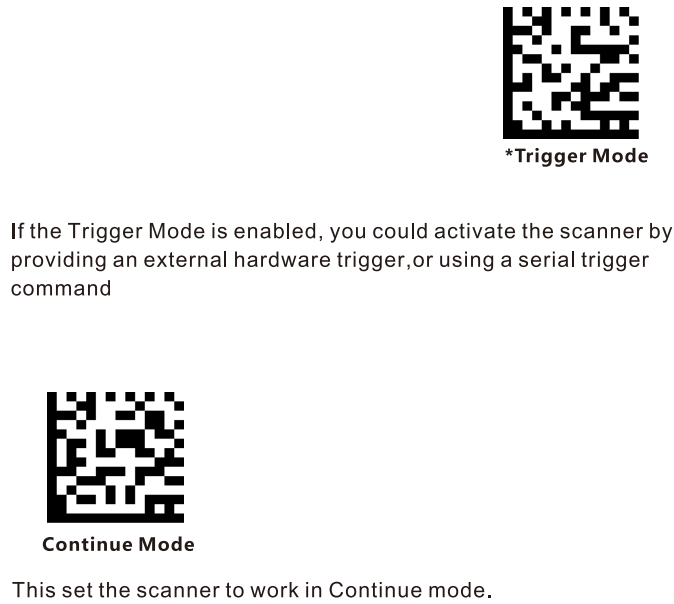
RS232 baud rate setting

Scanner baud rate setting should be same as receiver software.Default is 9600.



Barcode settings

① Scanning Mode



② Set Suffix



Light

LED Status	Description
Scanner	
Red light turn green	power on
Red light blinks	Pairing match
Green light blinks once	Upload successfully
Green light blinks twice	Upload failed
Green light on	Working normally
Red light on	Low battery
Blue light on	Charging normal
Green light on	Charging complete
Green light blinking	Pairing unsuccessful
Cradle	
Green light blinks 30s	Pairing state
Red light on	USB identify failed
Green light blinks once	Uploaded successfully
Green light on	Working normally

Buzzer

Scanner beeper mode	Description
Four Beeps	power On
Short three beeps	Pairing successfully
Short one beep	Scan and transmit successfully
Short three beeps	Data upload failed
short one beep	Power off
Long short beep	Enter Setting Mode

Buzzer

Craddle beeper mode	Description
Four Beeps	power On
Short one beep	Scan and transmit successfully

🔍 Troubleshooting Q&A:

Q1.:Cradle upload data via RS232,no data display when scan bar code.
A1: Should confirm interface is RS232(Refer to Interface Setting Mode).Should confirm scanner baud rate is same as Rs232 software.

Q2:Upload data via USB, no data upload and alarm buzzer after scanning bar code.

A2: Set scanner upload data interface as USB. Set scanner working mode as real time mode.

Q3:Cradle LED not on when upload data via RS232.
A3: Refer to “Cable connection guide” to check power supply.